

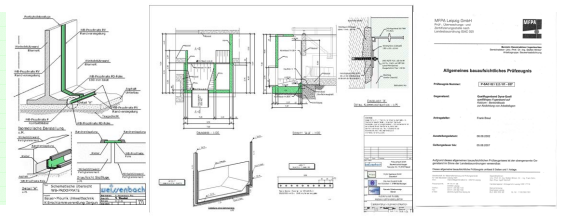


[www.wei ssenbach. de](http://www.weissenbach.de)
= *the waterstop people* =

RESOURCES FOR PLANNERS

Testing reports, construction details and planning aids

Waterproof concrete construction in accordance with DIN 1045/EN206 and DAfStb guidelines for waterproof concrete



WATERPROOFING CONCRETE

Xypex crystallization process

Impermeable concrete

Improved resistance to chemical attack



CONSTRUCTION COLD JOINTS

Metal Waterstops

Bentonite/bitumen coating

Expansions Waterstops

Bentomite and EPDM waterstops

Rubber Waterstops

WPVC / DIN 18541 / DIN 7865

Injection sytems

single- and multiple channel injection



EXPANSION JOINTS

Rubber Waterstops

WPVC, DIN 18 541, DIN 7865

Installation Aids

Systemelemente zur Lagesicherung

Joint Sealers

DIN 18 541, DIN 7865

Adhesive Systems

Proofmate



BRIDGING JOINTS

Bolted Flange installations

DIN 18195, hardware Sets, rubber waterstops and tools

Old-/New application

Contaseal Bentonite system



SPECIAL JOINTS

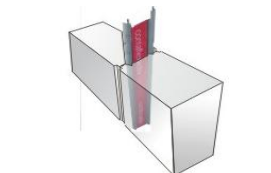
Slab joints

Shuttering and shear transfer system
Soundbarriers

Control joints

crack inducers

Pre-cast Walls



WATERPROOF PENETRATIONS

GASKETS, INSERTS, LINKSEALS, ASSEMBLIES

FEEDER SLEEVES, BOOTSLEEVES

WATERPROOF CABLE PENETRATION w/ STOPAQ

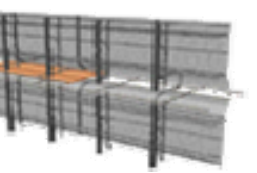


FORMWORK AND ACCESSORY

Weather resistant tubular forms

Architectural column bases and pedestals

Slabforms and shuttering

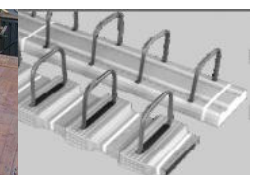


REBAR TECHNOLOGY

Punching Shear reinforcement

Starter Packs

Embed Profiles

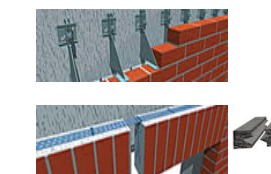


MASONRY

Structural crack repair

Waterproofing and rising damp control

Masonry reinforcement and brackets



XYPEX – Concrete Crystallization

Waterproof concrete with enhanced properties and high chemical resistance

- XYPEX ADMIX is a unique catalytic additive, which causes the formation of needle shaped micro crystals within the concrete matrix
- Improve the useful service life of your concrete structures by retardation of concrete destructing processes
- We will extend a limited ten year warranty (VOB/B) in combination with a comprehensive design and planning of your waterproof structure with respect to all waterproofing related issues and on-site construction supervision through our field engineers
- XYPEX can also be used in concrete rehabilitation and repair

Project selection 2007



Nursing Home, Edermünde-Besse



Shopping Mall, Eschwege



RMW Industries Factory, Rotenburg/F.



Lidl Shopping Center, Herzberg/Harz



XYPEX ADMIX

The XYPEX catalyst leads to the formation of micro-crystals during the hydration process.

These crystals will become an integral part of the concrete matrix and subsequently will fill out the otherwise open pores and capillaries.

The crystallization process is reactivated each time water penetrates, due to newly induced cracks.



WEISSENBACH – Waterstops

Our waterstops for cold joints have a proven track record spanning decades of successful installations throughout Europe. All our products adhere to the stringent standards of the German regulatory bodies and are MFPA tested and approved.

WB-contaflexactiv

Our bestselling cold joint waterstop features unparalleled efficiencies in ease of installation and secure waterproofing functionality. In addition to the barrier seal the bentonite coating will ensure an additional factor of safety

WB-MASTERseal

MASTERseal features easy installation in combination with a bond enhancing coating of bitumen

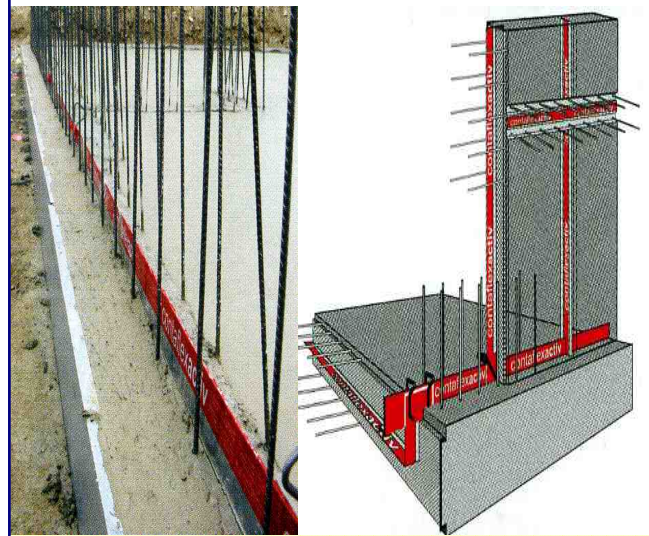
WB-SealVB

The traditional standard in coated technology

Roll sheets

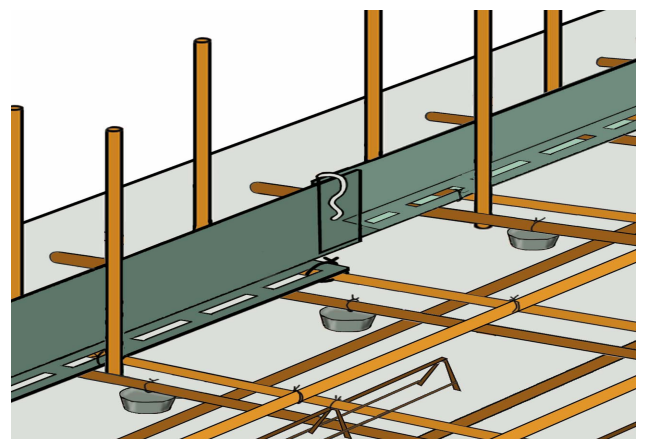
Contaflex and VB waterstops are also available as rolled material

Overview contaflexactiv

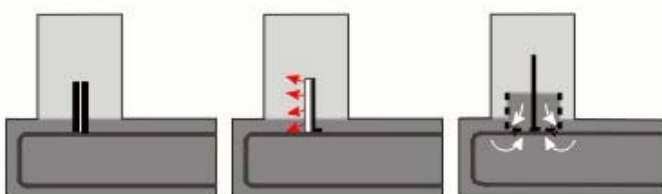


- barrier and swell seal in one
- twice as safe
- simple and speedy installation
- no additional hardware required
- integrated base
- true linear installation
- active splice seal
- handy element sizes of 225 cm (7'-6")

Übersicht MASTERdichtblech



- barrier seal with enhanced bond
- simple and speedy installation
- no additional hardware required
- integrated base
- true linear installation
- handy element sizes of 240 cm (8 ft.)

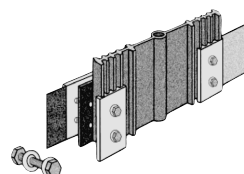
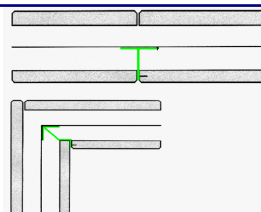
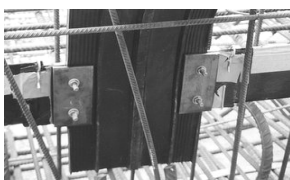


passive-bitumenous coating

active-bentonite coating

integrated edge form

Types of Metal - Waterstops



Accessories

We carry a wide range of accessories to provide economic and secure solutions for all types of applications. Whether joining cold joint waterstops to expansion joint seals or any conceivable installation requirement, we will deliver results.

WEISSENBACH – Bentonite Waterstops

Bentonite waterstops are a safe and proven method to permanently seal construction cold joints. The bentonite material will expand to up 400% of its original cross section, when expansion is unrestrained. Embedding the Bentonite seal in concrete will result in substantial internal pressure that leads to the self-injection of bentonite into the void volumes and thus making the passage impermeable

Cetco Waterstop RX 101

The unsurpassed original.

WB-BT 20/25

Our OEM version of the RX 101

WB-MASTERSTOP Series

Most economical bentonite waterstop especially formulated for the Eastern European and Asian markets

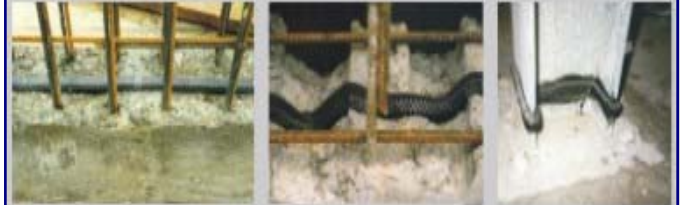
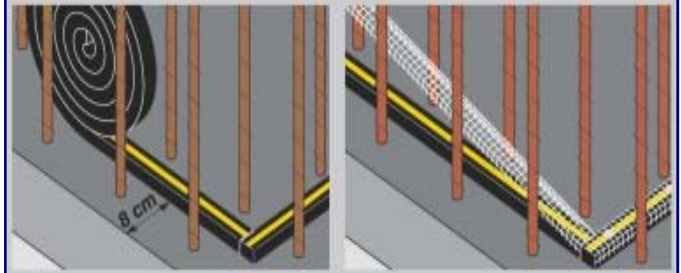
WEISSENBACH – SWELL ACTION WATERSTOPS

*Poly-chloroprene waterstops for precast joints subject to limited movement
CR-waterstops will expand to 1300% of initial volume. These waterstops are resistant to chemical attack in alkaline, acidic, mineral oils and organic solvents*

WB-Hydrotite

We are offering a large selection of CR-hydrotite profiles suitable for potable water application

WATERSTOP RX 101



- the industry standard for over 15 years
- MFPA tested and approved
- fast and inexpensive installation
- excellent swell properties



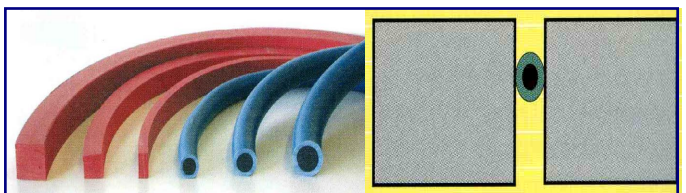
Our bentonite waterstops can be installed with ease and flexibility
Proven safety time and again – The waterstop you can trust!



Tunneling Joint Hydrotite

Hydrotite CR-Profile

Hydrotite



Contaseal Quellband

Contaseal Dehnfuge

CONTASEAL POLYMER Waterstop

Chemical resistant, durable EPDM waterstop for joints with three dimensional movement

WEISSENBACH – Injection Systems

Injection hose systems are placed in construction cold joints to form a pre-defined injection channel for a polyurethane injection to seal the joints. The injection hose systems are highly effective and produce an elastic joint seal. Multiple channel systems can be injected up to three times and therefore result in the highest degree of safety.

WB-MASTERTUBE

Robust one-channel hose, suitable for all application

WB-TRIOject

The industries multiple channel system of choice

WB-COMBIject

This combination product allows for additional safety. Should the joint show signs of seepage at a later point in time, you will have the benefit of injecting PUR-resin into joint and thus avoiding costly joint repairs

Accessories

We carry power actuated fastener, wet concrete clips, wire lath and injection couplers

Injection Materials

Our products are approved and certified.

We offer:

PUR resins

Epoxy resins

Acrylics

Micro cement pastes

MASTERTUBE



- MFPA tested and approved
- easy installation
- robust materials

TRIOject

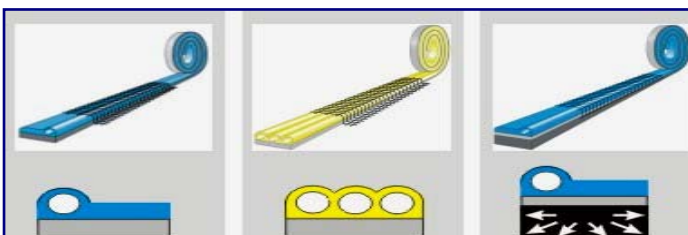


- MFPA tested and approved
- multiple injection possible
- large, flat surface contact
- usable for injection of polyurethanes, acrylates, cement suspensions



Accessory

full range of products



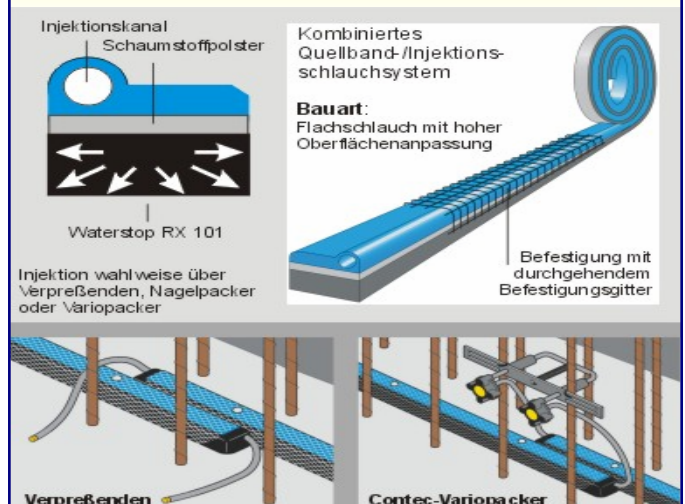
single channel
Mastertube
Superject

multiple channels
Trioject
Protect

combination product
hose
bentonite waterstop

Overview Types of Injection Hoses

COMBIject 3000



WEISSENBACH Gaskets and Seals

Faulty penetrations are one of the most common problems encountered in waterproof construction. Hence, penetrations need to be designed and executed with utmost care. We offer a variety of products that will certainly meet your expectations in regards to quality and safety.

Gasket Inserts

Our gaskets are manufactured in Germany and adhere to the highest standards. You can choose between galvanized and stainless steel configurations

Link Seals

Our Link Seals are versatile and allow for installation to existing pipes

Feeder Sleeves

You have the choice between ductile polymer feeder sleeves and high quality fibre reinforced concrete sleeves

Assemblies

Seals for standard openings, such as brown water lines are offered as plug-in assemblies

Cables and flexible hoses - Stopaq

Stopaq is a permanently ductile sealant against gas and water seepage.

Subsequent installations through penetrations sealed with Stopaq are possible at any time

Gasket Inserts



Damp proof in accordance with DIN 18 337
sizes 70 mm – 400 mm
other sizes upon request



Waterproof in accordance w/ DIN 18 336

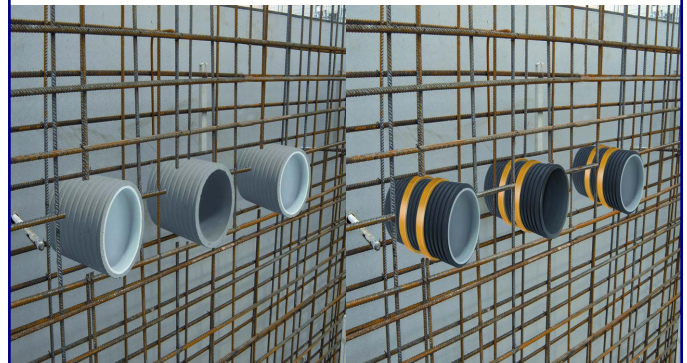


Multiple line gasket



blind seal

Feeder Sleeves



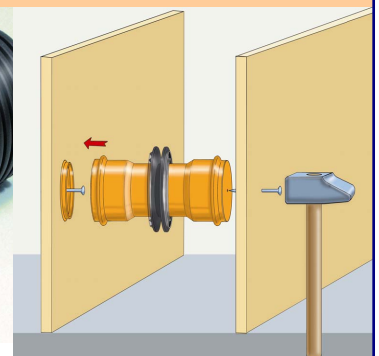
FASO sleeve
length 200-500 mm
diameter 80-300 mm

WELLO sleeve
length 200-600 mm
diameter 100-400 mm

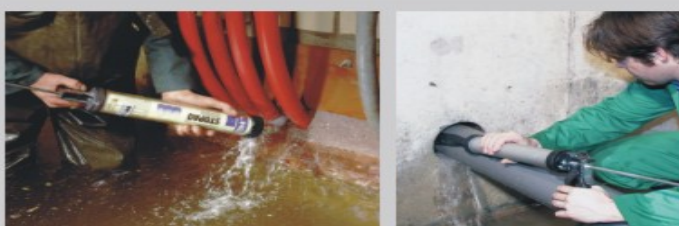
Assemblies



WELLO w/ link seal



assembly
w/ pipe boot



Seals under hydrostatic load adheres to nearly all surfaces
STOPAQ

WEISSENBACH MASONRY

Our masonry product line includes waterproofing systems for pressurized and non-pressurized applications, coatings, mortar additives, and sealants.

We also provide guidance and products to the structural rehabilitation of masonry.

DRYZONE

Dryzone is a special damp-proofing cream that is introduced along the mortar course at regular intervals by injecting it into pre-drilled holes. The Dryzone then diffuses before curing to form a continuous water-repellent barrier. This prevents the damp from rising up the wall. Since the 1950s, liquid chemical injection systems, which work in a similar way have been used to treat rising damp with a high degree of success.

Spiral anchor

The spiral anchor is a reinforcement material of austenitic special steel (material 1.4301). The special treatment of the reinforcing steel (rolled of a simple round wire, the wings become extremely work-hardened while the core remains relatively soft) ensures that, within a linear, elastic area, the spiral anchor is effective as a vigorous, wound spring, durably connecting the different parts of walls. During the raised wings above the core the adhesion between concrete and reinforcement is considerably superior to other standard reinforcing material. A spiral anchor mortar has to be used to incorporate and fix (e.g. to join shell constructions) the anchor in horizontal mortar joints.

MORTARS, PLASTER, COATINGS

Xypex Waterproofing
Ductile Membranes
Bitumenous Coatings
Chemical resistant renders etc.

DRYZONE – controlling rising damp



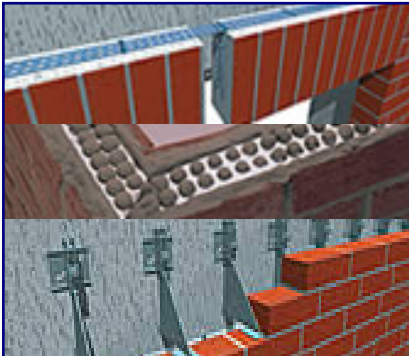
effective, inexpensive and proven barrier against rising damp

**drill
fill
done**



DRYZONE
Gezielte Sperre gegen aufsteigende Feuchtigkeit

bohren • verfüllen • fertig



Stainless steel line

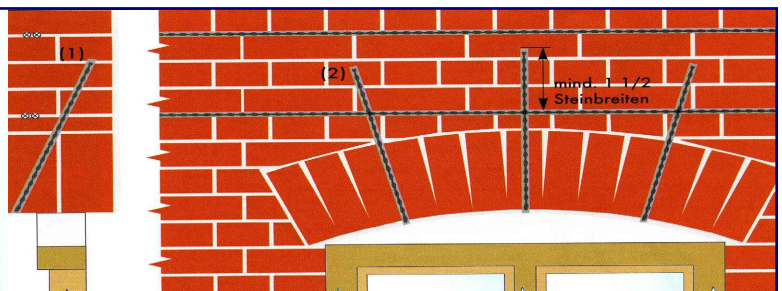
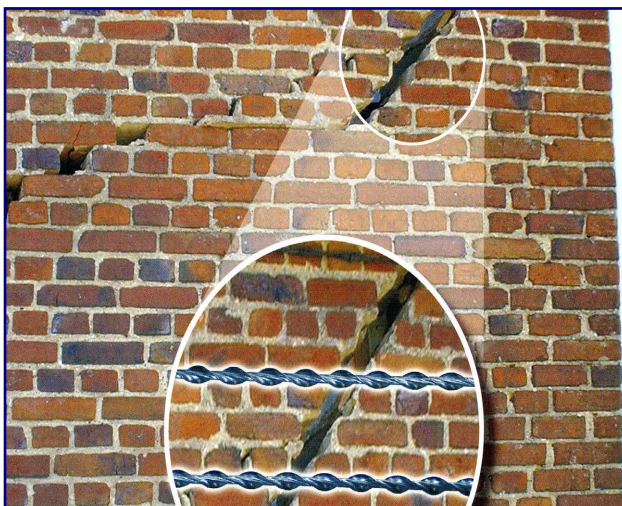
masonry rebar

support brackets

epoxy anchors

accessories

COATINGS TO DIN 18 195 Standard

Spiral Anchor Repair System

Low capital expenditure for processing technique

The spiral anchor can be embedded in:

hollow bricks, cavity blocks, sand-lime bricks, natural- and quarry-stone

The spiral anchor absorbs tensile and shearing forces